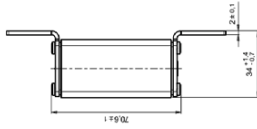
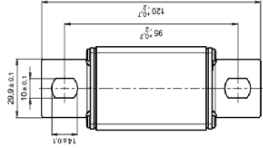
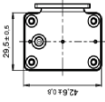


DC 1000 V URB-NHO

DC 1000 V URB-NHO



20 585 38



Class	aBat (IEC) aR (UL)
Rated breaking capacity	100 kA @ DC 1000 V (L/R ≈ 3 ms)
Standard	IEC 60269-1 IEC 60269-7 UL 248-13
Approval	 E180276
Packing unit Weight	4 pcs 0,27 kg/pcs

Rated Current	Article No.	Rated Voltage	Pre-arcing I _t	Total I _t @ DC 1000 V (L/R ≈ 3 ms)	Power dissipation
		V	A ² s	A ² s	W
125	20 585 38.125	DC 1000	3.700	8.900	21
160	20 585 38.160	DC 1000	6.600	16.000	26
200	20 585 38.200	DC 1000	9.900	24.000	33
250	20 585 38.250	DC 1000	13.800	47.000	50
315	20 585 38.315	DC 1000	21.000	72.000	76
350	20 585 38.350	DC 1000	26.500	90.000	85

Additional contact varieties and further technical explanations can be found in our official data sheets.

Application coefficients	
a	B1 max.
130	1,25
A2	B2
0,6	0,6
CF3	0,8

