
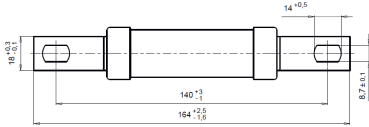
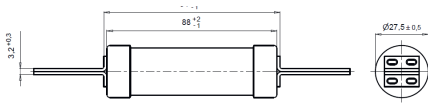


DC 1500 V Ø 27,5 x 88 mm (SM 140/SM 110)

 us E180276

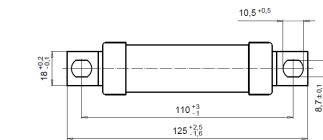
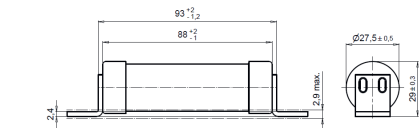


5027106

Verpackungseinheit / Packing unit: 10 Stück / 10 pieces

Betriebsklasse / Class
aBat/aR

IEC 60 269-1
IEC 60 269-7
UL 248-13



5027206

Bemessungs- spannung Rated Voltage	Artikel Nr. Article No	Größe Size	Bemessungsstrom Rated Current
V			A
1500	50 271 06	Ø 27,5 x 88 mm (SM140)	32-125
	50 272 06	Ø 27,5 x 88 mm (SM 110)	

Bemessungsausschaltvermögen / Rated breaking capacity **100 kA DC 1500 V**
L/R = 6 ms

Bemessungsstrom Rated Current	Artikel Nr. Article No.	Gewicht Weight	Bemessungs- spannung Rated Voltage	Bemessungsaus- schaltvermögen Rated breaking capacity @ DC 1500 V	Schmelz- integral Pre-Arcing I ² t-Value	Ausschalt- integral Total I ² t-Value @ DC 1500 V	Leistungs- abgabe Power Loss
A		kg / 1	V DC	kA	A ² s	A ² s	W
32	50 271 06.32	50 272 06.32	1500	100	185	1.850	8,5
40	50 271 06.40	50 272 06.40	1500	100	360	3.600	9,5
50	50 271 06.50	50 272 06.50	1500	100	600	5.900	12
63	50 271 06.63	50 272 06.63	1500	100	1.000	9.800	14
70	50 271 06.70	50 272 06.70	1500	100	1.300	12.800	16
80	50 271 06.80	50 272 06.80	1500	100	1.500	14.500	22
100	50 271 06.100	50 272 06.100	1500	100	1.900	18.500	33
125	50 271 06.125	50 272 06.125	1500	100	2.950	28.900	46

Applikationskoeffizienten / Application coefficients (Weiterführende Informationen [hier zum Download](#) / for more information [download here](#))

a	A2	B1 max.	B2	Cf3
130	06	1,25	06	0,8

DC 1500 V

Ø 27,5 x 88 mm (SM 140/SM 110)

UL us E180276

Zeit/Strom-
Kennlinien
Time-current
characteristics

